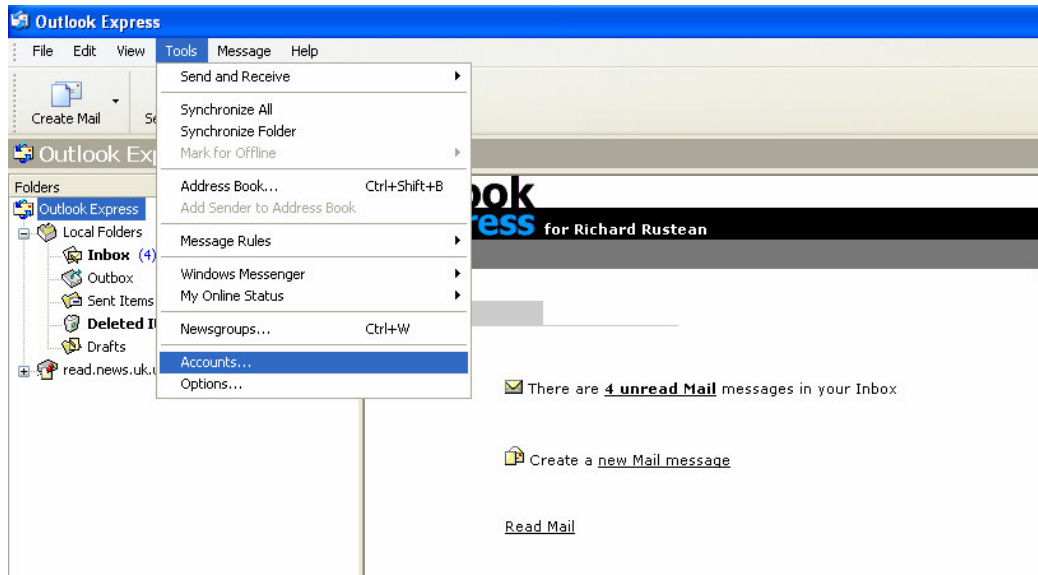
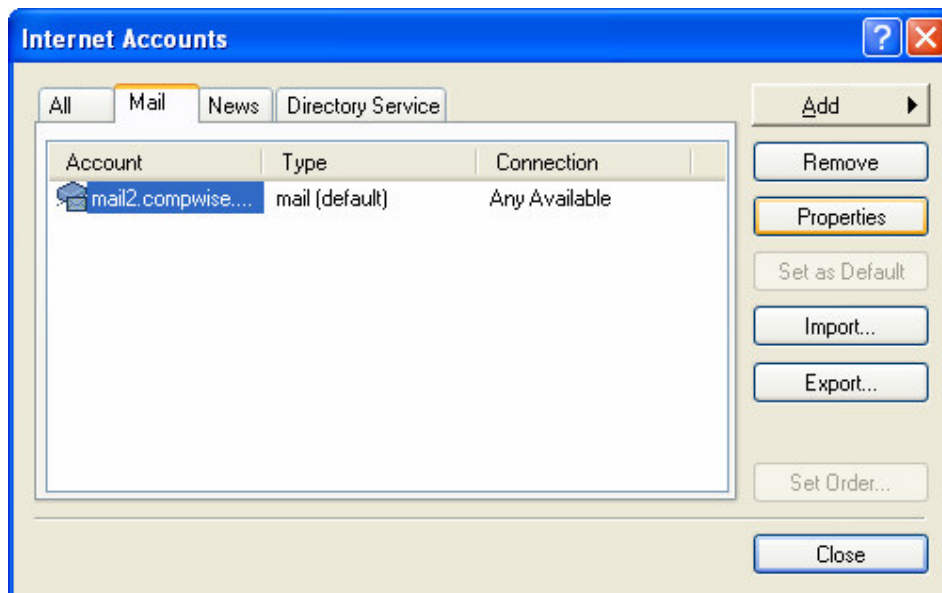


## How to set up Outlook Express to use SMTP Authentication

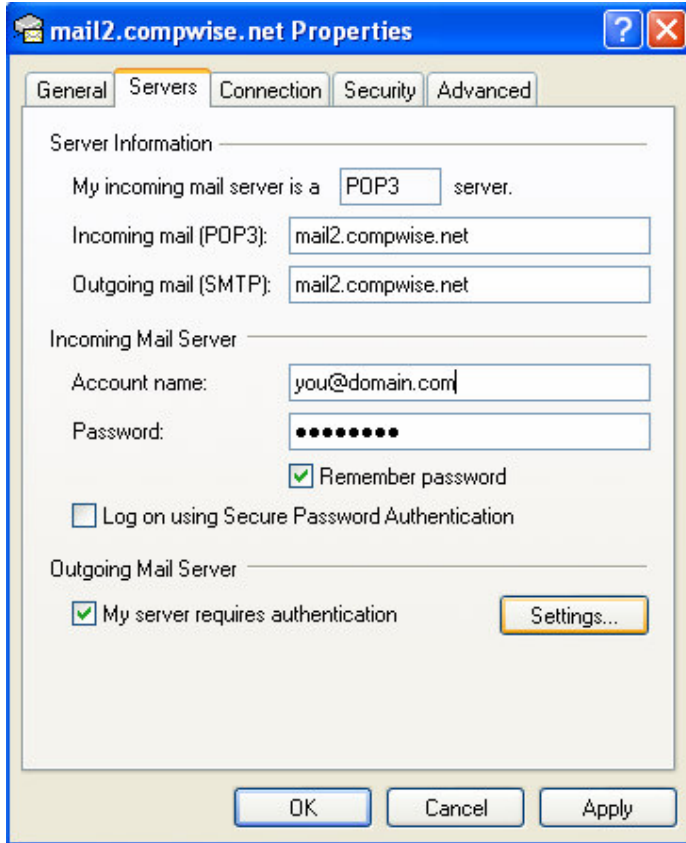
Open up Microsoft Outlook Express and select Tools from the menu bar. Then click Accounts.



On the Internet Accounts page, select your Compwise email account (this will usually be named mail2.compwise.net) and click properties.



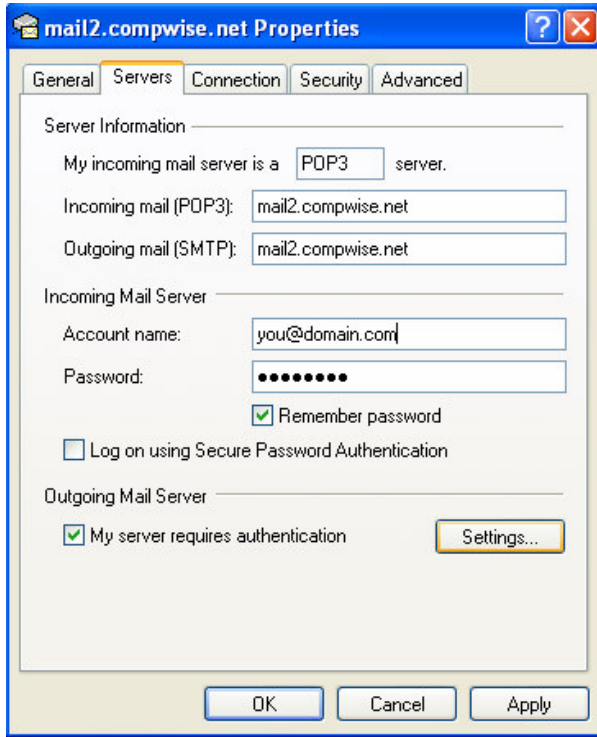
Select the Servers tab on the properties page and tick the My Server Requires Authentication checkbox. Then click the Settings button.



Make sure that the Use same settings as my incoming mail server button is selected. Then click OK



Click OK to exit the properties page



If you have other Compwise email accounts that need to be amended, select them, click properties and follow the above instructions.

Once you are all done click OK to exit the Mail Settings page. You should now restart Outlook Express.

