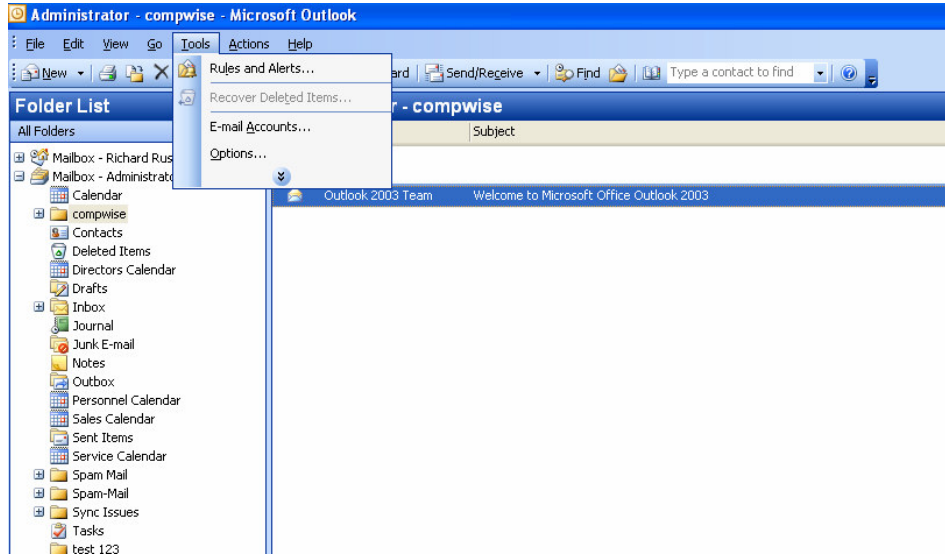
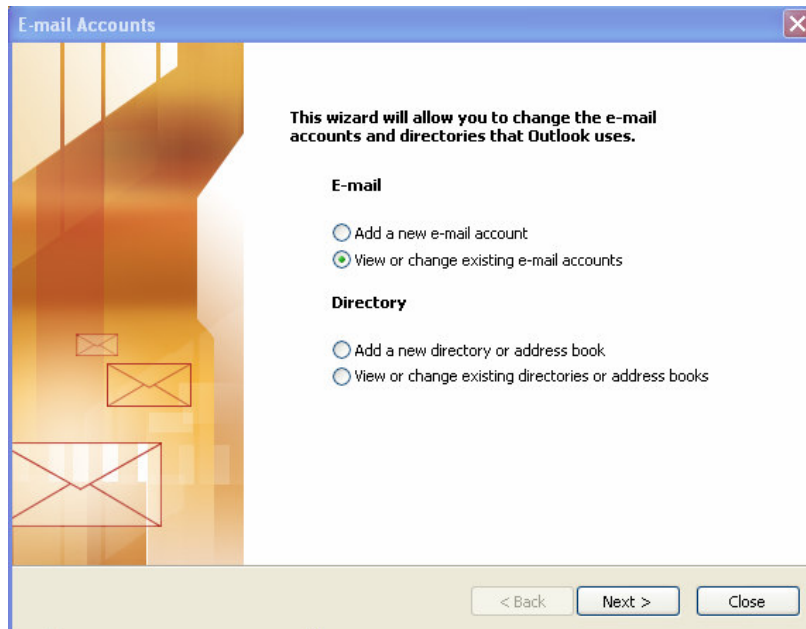


## How to set up Office 2003 to use SMTP Authentication

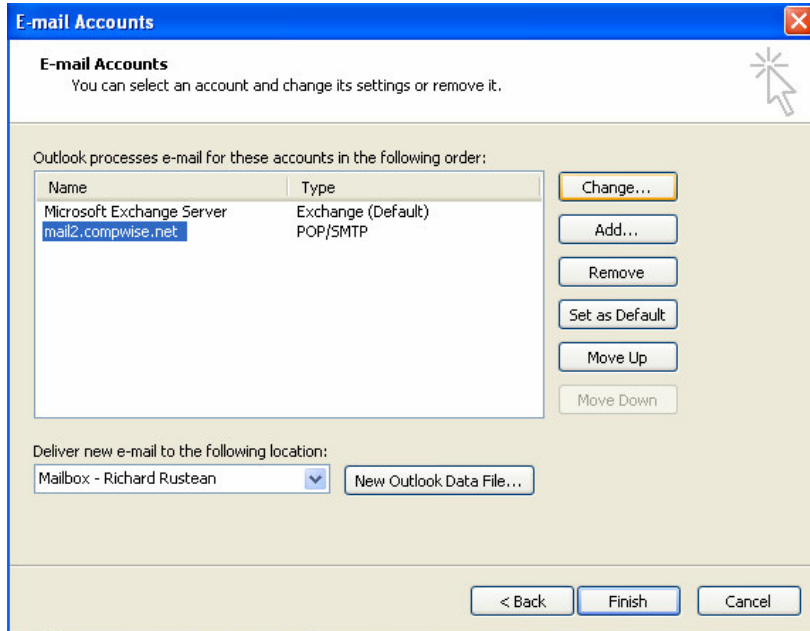
In Microsoft Outlook click on Tools from the menu bar and then select E-mail Accounts



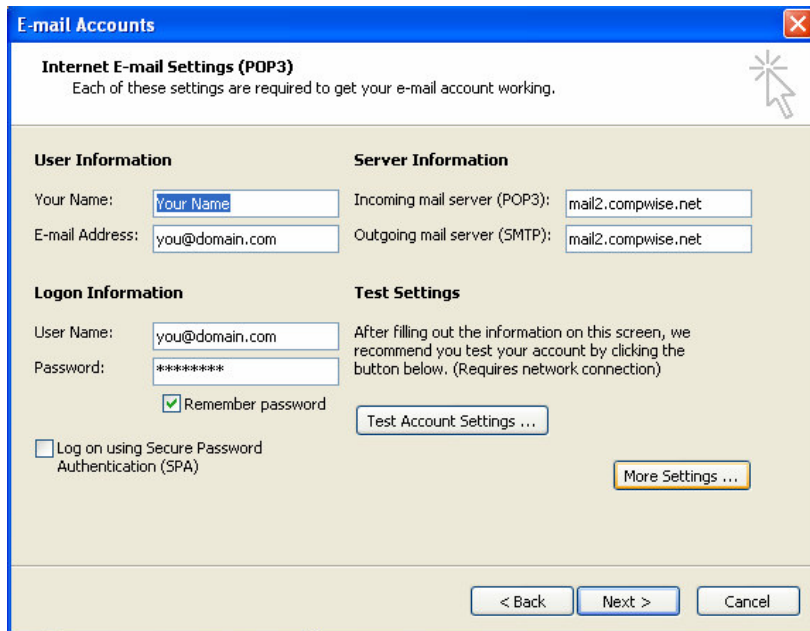
Select View or Change existing e-mail account on the next window and click Next



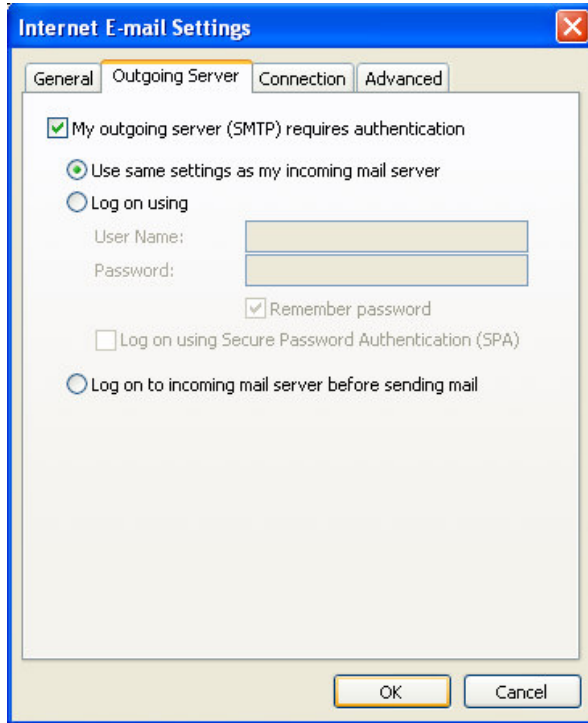
Select Your Compwise POP3 email account from the list (this will usually be names mail2.compwise.net) and click the Change button



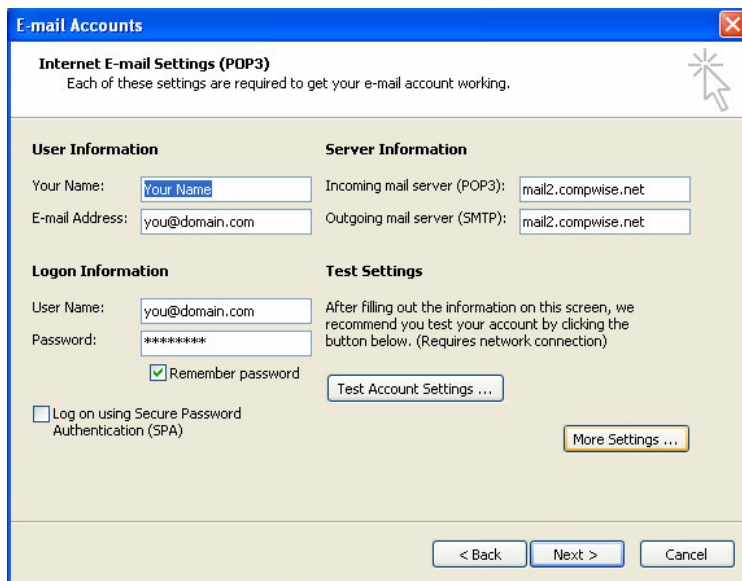
Click on the More Settings Button



Select the Outgoing Server tab of the window that appears and tick the My outgoing (SMTP) server requires authentication checkbox. Click OK



Click Next on the E-mail Accounts window



If you have any other Compwise accounts, then they will also need to be changed. To do this select the next account and follow the steps above.

When you are all done, click Finish.

